



Multiplatform Systems Administration

netOctopus® turns your network into a strategic asset by making system management smart and simple. From software installation, to system configuration, to comprehensive inventories, netOctopus saves time and money by dramatically increasing the productivity and efficiency of your support staff. A completely scalable solution, netOctopus is equally effective in a network of ten, hundreds, or thousands of Windows and Macintosh computers. Stop running around. With netOctopus, you can see, inventory, configure and manage hundreds of system and software settings on every workstation on your network without leaving your desk.

HIGHER PRODUCTIVITY WITH RAPID RETURN ON INVESTMENT

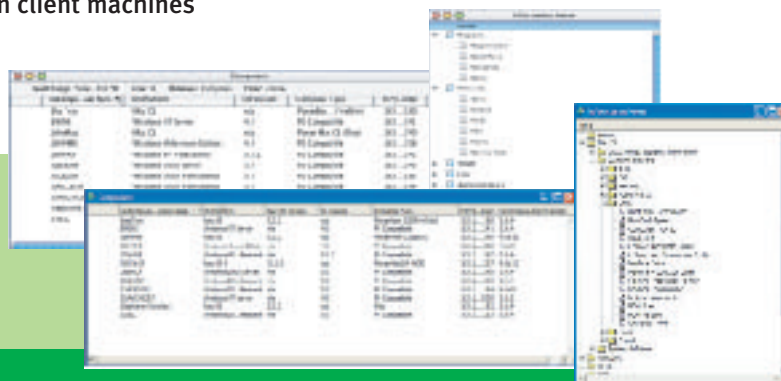
Right now, you may be spending hours, or even days on mundane tasks such as hardware and software inventories, or installing software updates. With netOctopus you can automate repetitive tasks such as these, giving you the time and information you need to manage the bigger challenges in your network, and your business.

netOctopus enables your organization to make the most of current IT investments. System administrators accomplish more in less time, optimizing their investments in hardware, software, and personnel. Even if you use netOctopus only to streamline file distribution and avoid time-consuming and costly manual updates, netOctopus can pay for itself in months. Combined with the increased user productivity, easy asset management, and remote troubleshooting that netOctopus provides, the return on investment quickly multiplies.

ASSET MANAGEMENT

netOctopus has so many advanced discovery features, using it is like adding hours to your day and a full-time asset manager to your staff. With netOctopus's unique custom information fields, the amount of information you can track is virtually unlimited. Performing calculations on automatically collected data, netOctopus can even report things such as depreciated asset values. Using netOctopus, you can remotely inventory:

- More than 500 standard hardware and system software items, and unlimited custom fields
- Active software running on client machines
- Installed software on client machines



Remotely Inventory Hundreds of Items

Use netOctopus to sort information quickly and simply.

netOctopus MULTIPLATFORM SYSTEMS ADMINISTRATION FOR THE ENTERPRISE

Lower Cost Through Centralized Management

- Save travel, time and reduce expenses across geographical boundaries.
- Control all workstations from one central location.
- Access any information on any desktop.
- Diagnose, troubleshoot, and resolve problems instantly.

Turns Your Network Into A Strategic Asset

- Multiplatform support for all Windows and Macintosh operating systems.
- Works across current LAN, WAN, and dial-up architectures.
- Minimal bandwidth usage.

Easy To Use

- Drag-and-Drop interface.
- Customizable and intuitive.
- Real time discovery and display.

- Active fonts on end user systems
- SNMP devices (printers, servers, serialized applications)
- Scan which user is on a particular OS version, using which software, with how much system memory quickly and from your workstation
- SMART hard disk information, alerting you to failing hard drives before data is lost

netOctopus stores information in a built in relational database, as well as your backend database, such as Oracle or SQL, making integration with your current inventory and reporting systems simple, and automated.

netOctopus software inventory ensures software license compliance, ensuring your users have the software updates they need and protecting your company from legal penalties.

SOFTWARE DISTRIBUTION

There is more to software distribution than simply removing the CD from the package. First, you need to know how many users have previous versions installed, how many systems need upgrades to operating systems or hardware before the new software can be installed. Because netOctopus integrates discovery features with asset management capabilities netOctopus can manage software distribution from inventory, to preparation to roll-out. With netOctopus, software distribution is simplified and automated. netOctopus can execute native installers, and install or update folders or single files.

In addition, with the special, included version of Mindvision's Installer VISE software, you can create custom packages using comparative snapshots of your model computer.

A study by the Gartner Group estimates that even if you use an automated tool such as netOctopus only for software distribution your Total Cost of Ownership will be reduced by \$13 per computer, per year.

REMOTE CONFIGURATION

netOctopus gives you all the information you need to identify and fix configuration problems remotely. You can identify out-of-date software or drivers, disable extensions, change system parameters, and assign or modify network settings — even synchronize all system clocks. netOctopus also allows you to:



More Time

By automating repetitive tasks, you can free yourself to use your technical talents more effectively. netOctopus helps you leverage your knowledge, rather than squander it on a million little jobs.

- Restart and shut down machines
- Change application memory allocation
- Fully configure and change user TCP/IP settings, including WINS configuration
- Change RAM settings
- Scan for viruses using software deployed by netOctopus
- Change registry values
- Move, copy, and delete files and folders

HISTORICAL ANALYSIS

netOctopus allows you to monitor how your workstations change over time. This time-saving feature will draw your attention to what is most important in your network — the changes which may affect performance. Information monitored includes:

- Unauthorized software installation or removal
- RAM theft
- Hard disk capacity issues
- PCI and NuBus card removal
- SCSI device removal
- IP address changes
- Display changes
- Processor upgrades

The screenshot shows a window titled 'netOctopus - Changes' with a table of workstation changes. The table has columns for 'Workstation Name', 'Change Type', 'Change Date', and 'Change Time'. The data rows show various changes such as 'Unauthorized Software Installation', 'RAM Theft', 'Hard Disk Capacity Issues', 'PCI and NuBus Card Removal', 'SCSI Device Removal', 'IP Address Changes', 'Display Changes', and 'Processor Upgrades' across multiple workstations.

Workstation Name	Change Type	Change Date	Change Time
Workstation 1	Unauthorized Software Installation	1/1/2000	10:00:00 AM
Workstation 2	RAM Theft	1/1/2000	10:00:00 AM
Workstation 3	Hard Disk Capacity Issues	1/1/2000	10:00:00 AM
Workstation 4	PCI and NuBus Card Removal	1/1/2000	10:00:00 AM
Workstation 5	SCSI Device Removal	1/1/2000	10:00:00 AM
Workstation 6	IP Address Changes	1/1/2000	10:00:00 AM
Workstation 7	Display Changes	1/1/2000	10:00:00 AM
Workstation 8	Processor Upgrades	1/1/2000	10:00:00 AM

[View Software Changes on Administered Workstations](#)

You Benefit

netOctopus provides the tools to enable your organization to make the most of current IT investments. Systems administrators accomplish more in less time and optimize their investments in hardware, software, and personnel.





Contact Information

North America Software Sales

14285 Midway Road
Suite 350
Addison, TX 75001
(800) 485-5741

Corporate Headquarters

Netopia Inc.
Marketplace Tower
6001 Shellmound Street,
4th Floor
Emeryville, CA 94608
Main (510) 420-7400
Fax (510) 420-7601
www.netopia.com

Europe Software Sales

Becanusstraat 13-15
bus5
6216 BX Maastricht
Netherlands
+31 (0) 43 354 5020

Customer Service

Main (510) 814-5000
Fax (510) 814-5314
(Outside the U.S. or
Canada, call Customer
Service for your local
Netopia distributor.)

Regardless of network type or size, netOctopus helps you take control of the systems you administer, and take control of your time. No more system-by-system installing, upgrading, addressing, or fixing. It's all about time – time you could be using to plan the growth of your company's network.

ACCOMPLISH MORE!

With netOctopus, System Administrators accomplish more in less time and optimize their investments in hardware, software, and personnel. According to Gartner Group research, full-featured asset management software such as netOctopus can reduce your network support labor costs by 20%.

