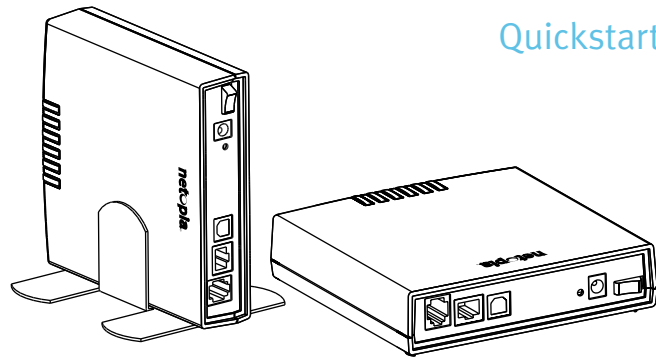


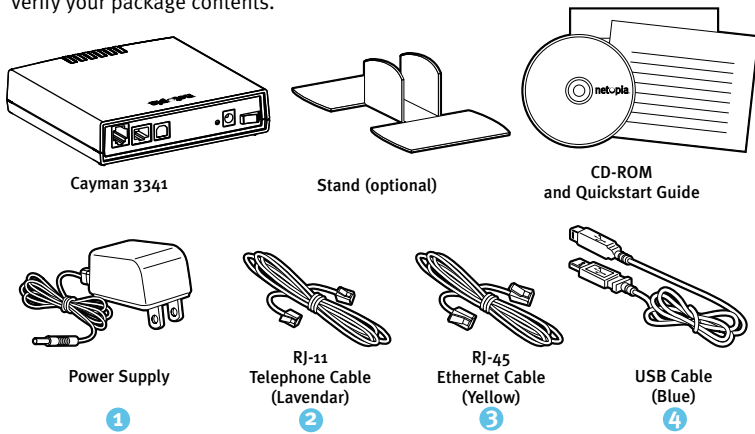
# Cayman<sup>®</sup> 3341

## Quickstart Guide

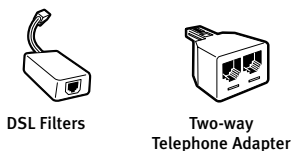


### Unpack the Cayman 3341

Verify your package contents.

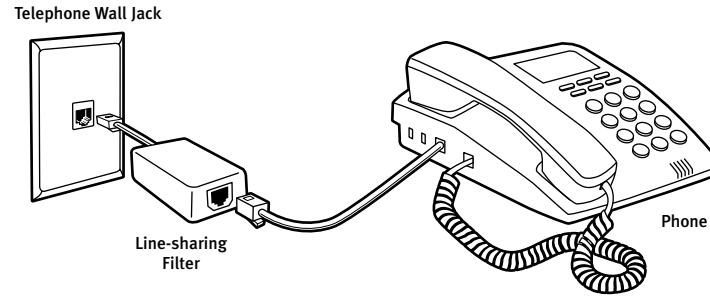


Your package may also include:

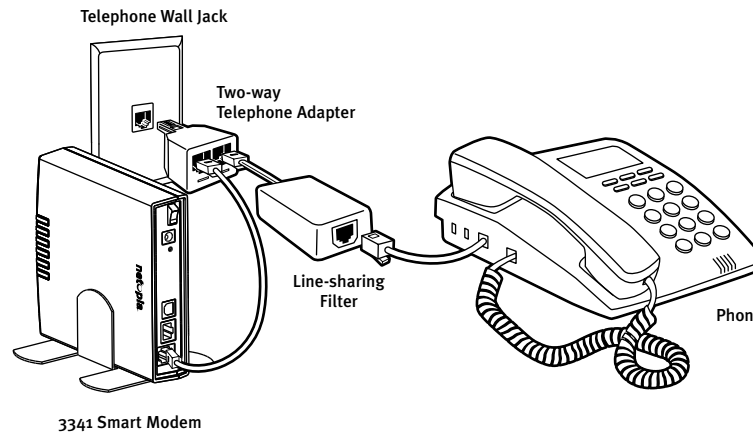


### Install DSL Filters

1. Install a DSL filter on every telephone (or another telephone device, such as a fax machine or caller-id box) that shares your DSL line, as shown.



2. If the phone jack where you plan to plug in your Cayman 3341 is already connected to a telephone or telephone device, use the two-way telephone adapter to connect both the Cayman 3341 and your telephone or telephone device to the same jack.



### Set up the Cayman 3341

1. Place the Cayman 3341 near your PC or another location that permits easy access and visibility. You can lay the Cayman 3341 flat, or stand it upright using the stand if supplied as an option.

Make sure any Ethernet cables are kept away from power cords, fluorescent lighting fixtures, and other sources of electrical interference. Put the Cayman 3341 in a location where air can circulate freely around it.

2. Connect the Power Supply to the power jack labeled 1 on the back panel of the Cayman 3341. Plug the Power Supply into the nearest electrical outlet.

3. Turn on the power using the power switch.

The **Power** light should come on solid green.

4. Connect the lavender RJ-11 Telephone Cable from the DSL port labeled 2 on the Cayman 3341 to the phone jack that supports your DSL service.

The **DSL Sync** indicator light should blink for up to two minutes and then come on solid green.

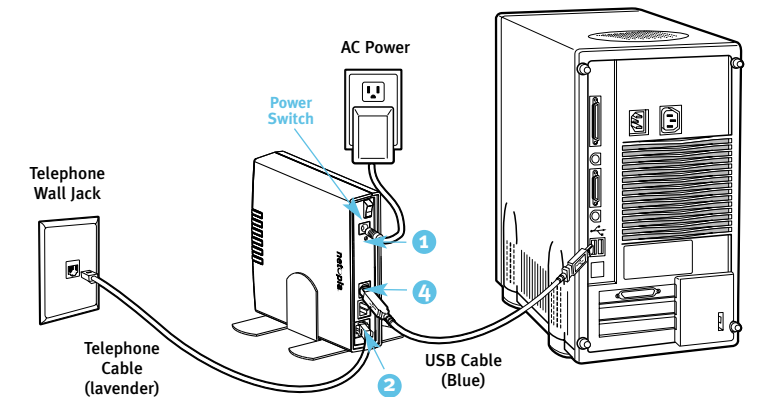
5. (PCs using Microsoft Windows only) Insert the CD-ROM into your PC's CD-ROM drive.

The Cayman Installation Wizard will assist configuring your PC to work with the Cayman 3341. The Cayman Installation Wizard will launch automatically.

- a. If both the Ethernet and USB ports are available on your PC, the Cayman Installation Wizard will ask you to decide whether you want to use the Ethernet Cable or the USB Cable to connect to the Cayman 3341. Alternatively, you may use both ports on the Cayman 3341, provided that no more than two users are connected at one time. Make your selection and proceed.

- b. When the Cayman Installation Wizard prompts you, connect the cable as shown in the following diagrams for the first computer:

#### USB Connection method (Windows-based PCs only)



Connect the Cayman 3341's USB port labeled 4 to the USB port on your PC using the blue USB Cable. The **USB Active** light should come on solid green.

The Cayman Installation Wizard will automatically install USB drivers for your USB connection and launch your Web browser.

Unless you are also using the Ethernet port, skip the Ethernet Connection method step and go directly to the [Configure the Cayman 3341](#) step on page 6.

## Set up the Cayman 3341 (continued)

### Windows 2000 and XP

- Right click on the **My Network Places** icon on your Windows desktop and select **Properties** from the drop-down menu.
- Select your **Local Area Connection**.
- Right click on your **Local Area Connection** and select **Properties**.
- Select **Internet Protocol [TCP/IP]**.
- Click the **Properties** button.
- Click the **Obtain IP address automatically** radio button and the **Obtain DNS server address automatically** radio button. Click the **OK** button.
- Restart your PC when prompted.
- Go to [Configure the Cayman 3341](#) on page 6.

### Macintosh

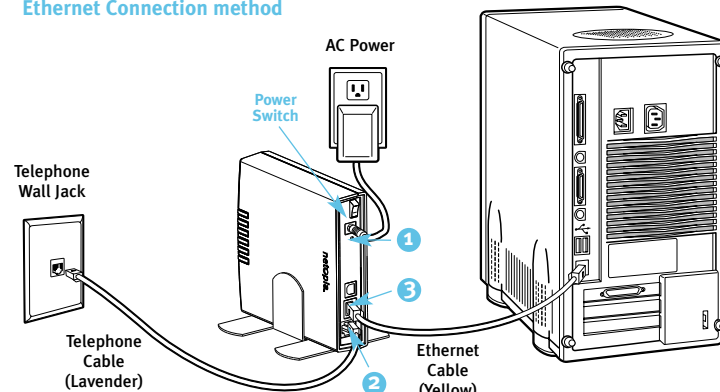
Your Macintosh must be using MacOS 7.6.1 or higher.

- Select **Control Panels** from the Apple menu.
- Open the **TCP/IP Control Panel**.
- Choose **Connect via Ethernet**.
- Choose **Configure Using DHCP Server**. Close and Save.
- Launch your preferred internet browser and enter “Cayman” as the desired network location.
- Go to step 2 of [Configure the Cayman 3341](#) on page 6.

### Mac OS X users

- Launch **System Preferences** from the Dock or from the Apple Menu.
- Select the **Network** Preference Pane.
- Choose Show: **Built-in Ethernet**.
- Click the **TCP/IP** tab.
- Choose **Configure: Using DHCP**.
- Quit System Preferences. You do not have to restart the Macintosh.
- Launch your preferred internet browser and enter “Cayman” as the desired network location.
- Go to step 2 of [Configure the Cayman 3341](#) on page 6.

### Ethernet Connection method



Connect the Cayman 3341's Ethernet port labeled 3 to the Ethernet port on your PC using the yellow Ethernet Cable. The **Ethernet Link** light should come on solid green.

- If the Cayman Installation Wizard detects the required network settings in your PC, it will automatically launch your Web browser and you can proceed directly to [Configure the Cayman 3341](#) on page 6.
- If your PC needs to have its network settings changed, Perform the following:

### Windows 95, 98 and ME

On your PC, go to:



Open the network window by double-clicking the **Network Icon**



In the list of network components, highlight the entry that says **“TCP/IP (your Ethernet card here)”**



Click **Properties**

In the **TCP/IP Properties** window

Select  **Obtain an IP address automatically** and click **OK**

In the **Network** window, click **OK** and restart your computer.

Go to [Configure the Cayman 3341](#) on page 6.

## Configure the Cayman 3341

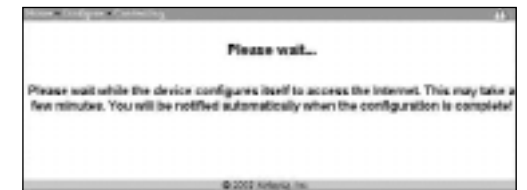
1. The Cayman Installation Wizard will launch your Web browser application, such as Netscape Navigator or Microsoft Internet Explorer, from your PC connected to the Cayman 3341.
2. The Cayman 3341 then displays the Quickstart Web page.  
(If for any reason the Wizard does not take you to the Quickstart web page, type in <http://192.168.1.254> into your location text box)



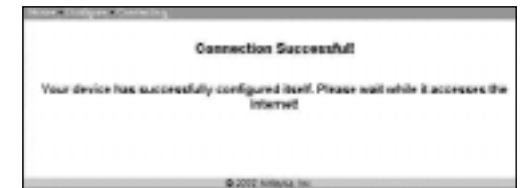
3. Enter the username and password supplied by your Internet Service Provider. Click the **Connect to the Internet** button.

After you enter your username and password here the first time, you will not have to enter them each time you access the Internet. The Cayman 3341 stores this information and automatically connects you to the Internet.

The Cayman 3341 displays a message while it configures itself.



4. When the connection succeeds, your browser will display a success message.



Once a connection is established, your browser is redirected to Netopia's product registration web page.

5. **Congratulations!** Your installation is complete. You can now go to any Web site by typing the address “URL” in your browser's location box and hitting the Enter key on the keyboard of your PC or by selecting from your bookmarks with the addresses of your favorite Web sites.